

# SandFORMS

*Unique Design Elements*

Sand FORMS are original design elements prescribed by Architects & Draftsman and rented as moulds to concrete contractors for tilt panels. Available in 2 sizes, (2440 x 530mm & 850 x 530mm).

SandFORMS are made from durable hi-tech silicone rubber, with rigid polyester backing. Simply position backing & mould to form work base with Mastic, pour concrete, vibrate and strip off when cured.

Taken from the beaches of North Coast NSW, they are the embodiment of the idea, "Comprehend and Copy Nature", championed by Living Water Flowforms and demonstrated in our entire product range.

#### USES:

Decorative Concrete Tilt Panels  
Interior or Exterior Walls,  
ceilings or floors.  
Restaurant Entrances,  
Hotel Foyers, Reception.  
Spa, Sauna, Swimming Pool  
surfaces.

Consider using SandFORMS as elements of your next project. Simply rent the mould of your choosing and cast as many forms as your project requires.



*To hire your SandFORMS through our Rent-A-Mould system. Simply call Living Water Flowforms on 02 6685 5417*

\* Computer generated image



**LIVING WATER**  
**Flowforms**

Unit 3/5 Fern Place, Arts & Industry Estate, BYRON BAY 2481  
Ph: (02) 6685 5417 Fax: (02) 6685 5040  
Email: [info@livingwaterflowforms.com](mailto:info@livingwaterflowforms.com)  
[www.livingwaterflowforms.com](http://www.livingwaterflowforms.com)



# RENT-A-MOULD

## Moulds for Concrete Cast Panels from Living Water Flowforms

Tilt panel decoration taken from sand forms on Byron beaches. These patterns can be cast into concrete as many times as needed. Position backing and mould to form-work base with gap filler, pour concrete, tilt and strip off when cured.

**SPECIAL ORDERS AVAILABLE UPON REQUEST**

**NEW MOON**



845 x 525 x 30mm

Durable hi-tech silicone mould with rigid polyester backing.

\$66 PER DAY+\$100 DEPOSIT

\$242 PER WEEK +\$150 DEPOSIT

**TWILIGHT**



845 x 525 x 30mm

Durable hi-tech silicone mould with rigid polyester backing.

\$66 PER DAY+\$100 DEPOSIT

\$242 PER WEEK +\$150 DEPOSIT

**HIGH TIDE**



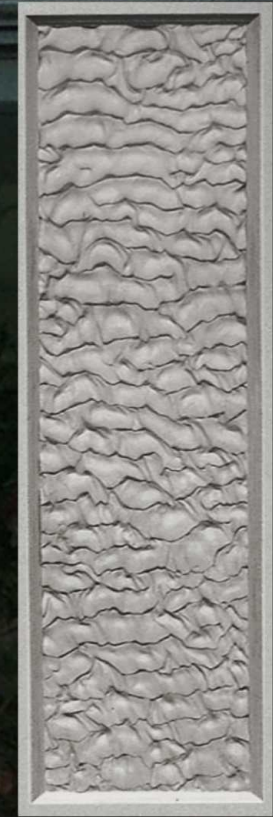
845 x 525 x 30mm

Durable hi-tech silicone mould with rigid polyester backing.

\$66 PER DAY+\$100 DEPOSIT

\$242 PER WEEK +\$150 DEPOSIT

**SUNRISE**



2440 x 530 x 45mm

Durable hi-tech silicone mould with rigid polyester backing.

\$99 PER DAY+\$150 DEPOSIT

\$363 PER WEEK +\$300 DEPOSIT



LIVING WATER  
**Flowforms**

Unit 3/6 Fern Place, Arts & Industry Estate,  
BYRON BAY 2481  
Ph: (02) 6685 5417 Fax: (02) 6685 5040

PRICES INCLUDE GST - WEEK = 7 DAYS - 1 DAY = 24HRS

**PH: 02 6685 5417**